



# TRAIN ORDERS

Volume 2007, Number 5

September-October 2007

The Santa Maria Valley Railway Historical Museum

P.O. Box 264, Santa Maria, CA 93456-0264; (805) 714-4927

The Museum: Santa Maria Town Center Mall, Sat./Sun. 1-4:30pm

<http://www.smvrhm.org/> School/Club groups by appointment.

## Phil Goble

So long, good friend. We'll keep the rails shiny for you.



Phil Goble, co-founder of the Santa Maria Valley Railway Historical Museum (SMVRHM) passed away while driving to Choo Chew Saturday with a carload of supplies for the BBQ on September 22, 2007.

Phil served on the SMVRHM Board of Directors since its inception in 1999, and has been its Treasurer all along as well.



Known as "CaBoss", Phil led the charge on the restoration of Caboose No. 180. On January 6, 2005, Phil was presented a plaque and a model of Caboose No. 180 for his leadership and energy poured into the multi-year effort to restore the caboose.



## Meetings

**General:** first Thursday of the month, 6:00pm, at the Santa Maria Inn.

**Museum Development:** Thursdays (except first Thursdays) at the Museum, email Dan for info

**HO Modelers:** Thursdays at the Museum, 7:00pm. 🚂

## Rail Bosses

(Reverse emails to use - sorry, it's a spambot thing.)

**Dan Alves**, President, [juno.com@aaim](mailto:juno.com@aaim)

**Dick Mininger**, Vice President, [aol.com@boothr8](mailto:aol.com@boothr8)

**Pam Goble**, Treasurer

**Jamie Foster**, Secretary, "Train Orders" Editor, Webman, [jf2.com@pbjrr](mailto:jf2.com@pbjrr) 🚂

# Choo Chew Saturday

September 22, 2007.

About 200 people joined in the railroading fun at the Bitter Creek Western Railroad (BCWRR). Our greatest thanks to Karl and all the folks at the BCWRR for hosting our fundraiser!



The Santa Maria folks always get a big kick out of riding behind Kevin's SMVRR No. 1801.



# Bring Back Union Sugar No. 1

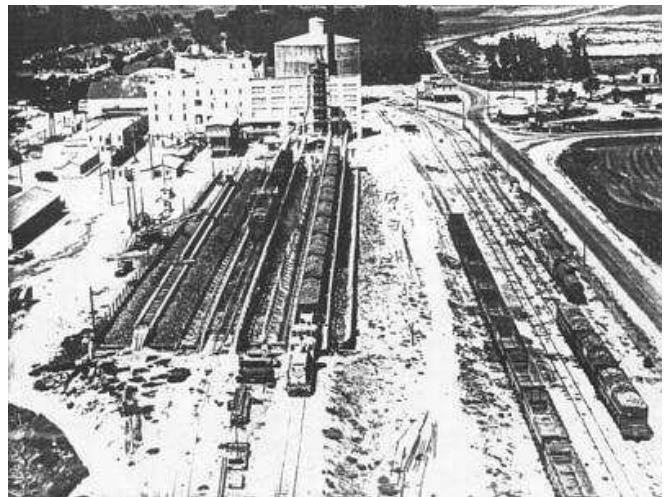


## You or Your Business Can Help!

- \_\_\_ Brakeman - \$100
- \_\_\_ Fireman - \$500
- \_\_\_ Engineer - \$1,000
- \_\_\_ Other - \$ \_\_\_\_\_

Send your contribution to:  
Santa Maria Valley  
Railway Historical Museum  
PO Box 264  
Santa Maria, CA 93456-0264

All financial supporters at \$100 and above will be memorialized on a plaque at the point of display, initially envisioned to be in the historic district in downtown Santa Maria along McClelland Street.



Pictured above is the sugar refinery at Betteravia where Union Sugar No. 1 operated. The highlines are center and left where the sugar beets were unloaded into the refinery. On the right is a rail yard.

