



# TRAIN ORDERS

Volume 2008, Number 1

January-February 2008

The Santa Maria Valley Railway Historical Museum

P.O. Box 264, Santa Maria, CA 93456-0264; (805) 714-4927

The Museum: Santa Maria Town Center Mall, Sat./Sun. 1-4:30pm

<http://www.smvrhm.org/> School/Club groups by appointment.

## Holiday Lionel Open House a Crowd Pleaser



It was quite a task to get this size layout in our currently small space, but we did it! You'll note above that the speeder was put out in the hallway.



Children of all ages watched as trains zoomed in and out of tunnels!



## Meetings

**General:** first Thursday of the month, 6:00pm, at the Santa Maria Inn.

**Museum Development:** Thursdays (except first Thursdays) at the Museum, email Dan for info

**HO Modelers:** Thursdays at the Museum, 7:00pm. 🦋

## Rail Bosses

(Reverse emails to use - sorry, it's a spambot thing.)

**Dan Alves**, President, [juno.com@aaim](mailto:juno.com@aaim)

**Dick Mininger**, Vice President, [aol.com@boothr8](mailto:aol.com@boothr8)

**Pam Goble**, Treasurer

**Jamie Foster**, Secretary, "Train Orders" Editor, Webman, [jf2.com@pbjrr](mailto:jf2.com@pbjrr) 🦋

# Benefit Dinner and Auction To... Friday 29 Feb 2008

Your Orcutt Youth Organization Building  
725 E. Foster Rd.  
Santa Maria, CA  
No-Host Cocktails 5:30pm  
Dinner 6:30pm  
Auction 7:30pm  
Donation \$100 (includes dinner for 2)  
Door Prizes

Send name, address, and payment to:  
SMVRHM  
PO Box 264  
Santa Maria, CA 93456

Proceeds go to the Santa Maria Valley Railway Historical Museum's project to "Bring Back Union Sugar No. 1"!



## Don't let this one get away!

Significant locomotives from the Valley's past have slipped from our grasp over the years, such as the Santa Maria Valley Railroad (SMVRR) No. 205 that used to be on display at the Fairgrounds, and No. 21, the SMVRR's most well-known locomotive. Together, we can get U.S. No. 1 back for good!

Union Sugar Company No. 1 was a plant switcher at the Betteravia sugar refinery. Union Sugar, named to represent the union of interests of San Luis Obispo and Santa Barbara Counties, was conceived in the late 1800s and began operations in September of 1899. Originally serviced by the Southern Pacific Railroad and the Pacific Coast Railway, the Santa Maria Valley Railroad became involved after its inception in 1911 and continued hauling beet gondolas for the refinery until the refinery closed in 1993.

Currently in storage at the California State Railroad Museum in Jamestown, CA, this 0-4-0T steam locomotive was originally built as the Chicago, Rock Island & Pacific No. 84 (CRI&P) in 1884. 🍷

# Bring Back Union Sugar No. 1

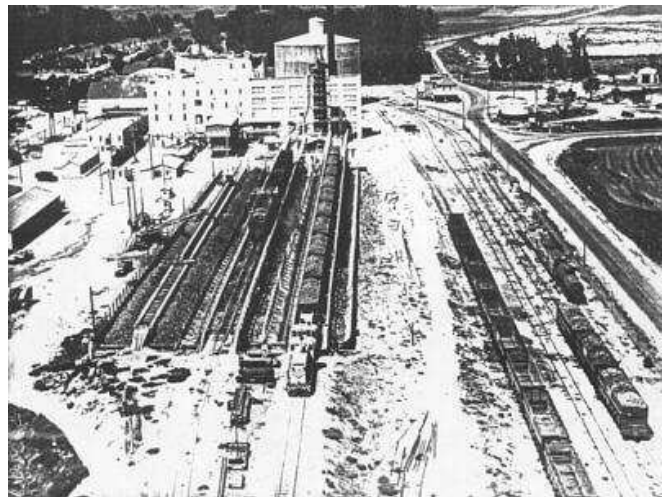


## You or Your Business Can Help!

- \_\_\_ Brakeman - \$100
- \_\_\_ Fireman - \$500
- \_\_\_ Engineer - \$1,000
- \_\_\_ Other - \$ \_\_\_\_\_

Send your contribution to:  
Santa Maria Valley  
Railway Historical Museum  
PO Box 264  
Santa Maria, CA 93456-0264

All financial supporters at \$100 and above will be memorialized on a plaque at the point of display, initially envisioned to be in the historic district in downtown Santa Maria along McClelland Street.



Pictured above is the sugar refinery at Betteravia where Union Sugar No. 1 operated. The highlines are center and left where the sugar beets were unloaded into the refinery. On the right is a rail yard. 🍷